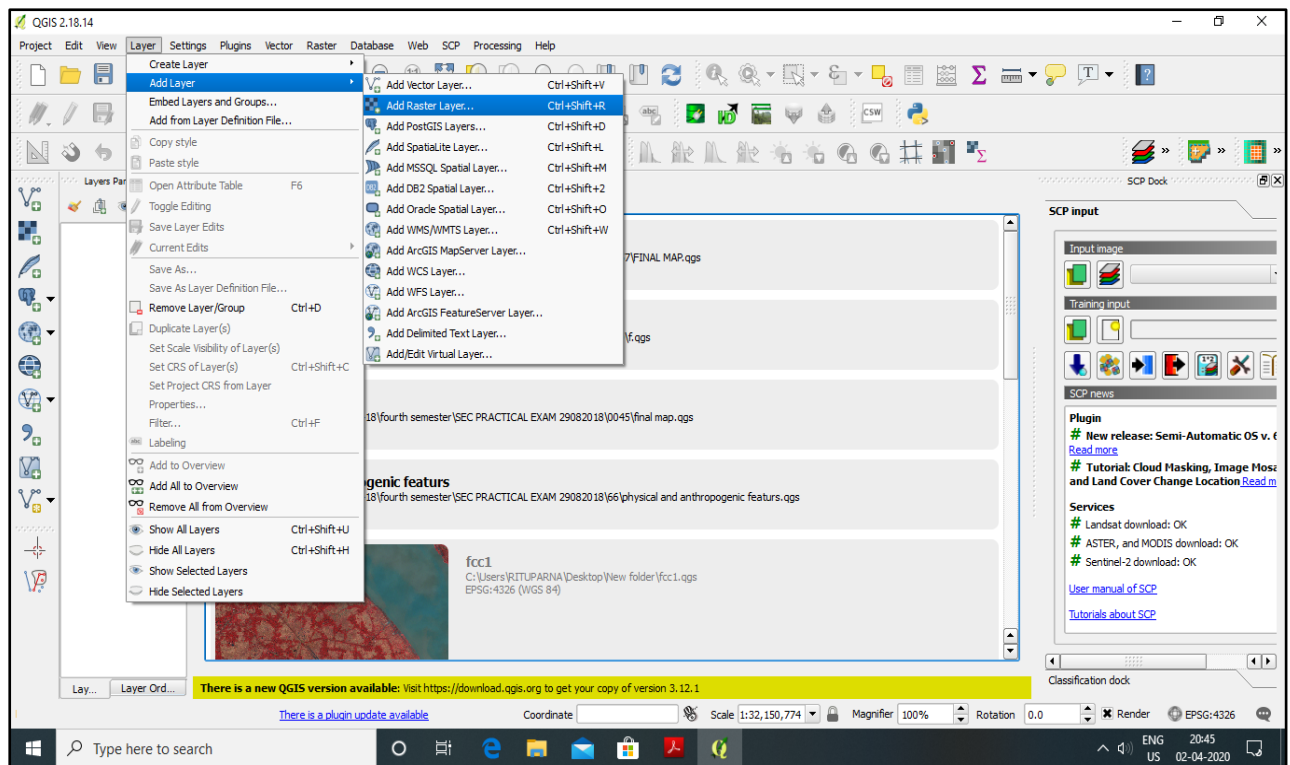
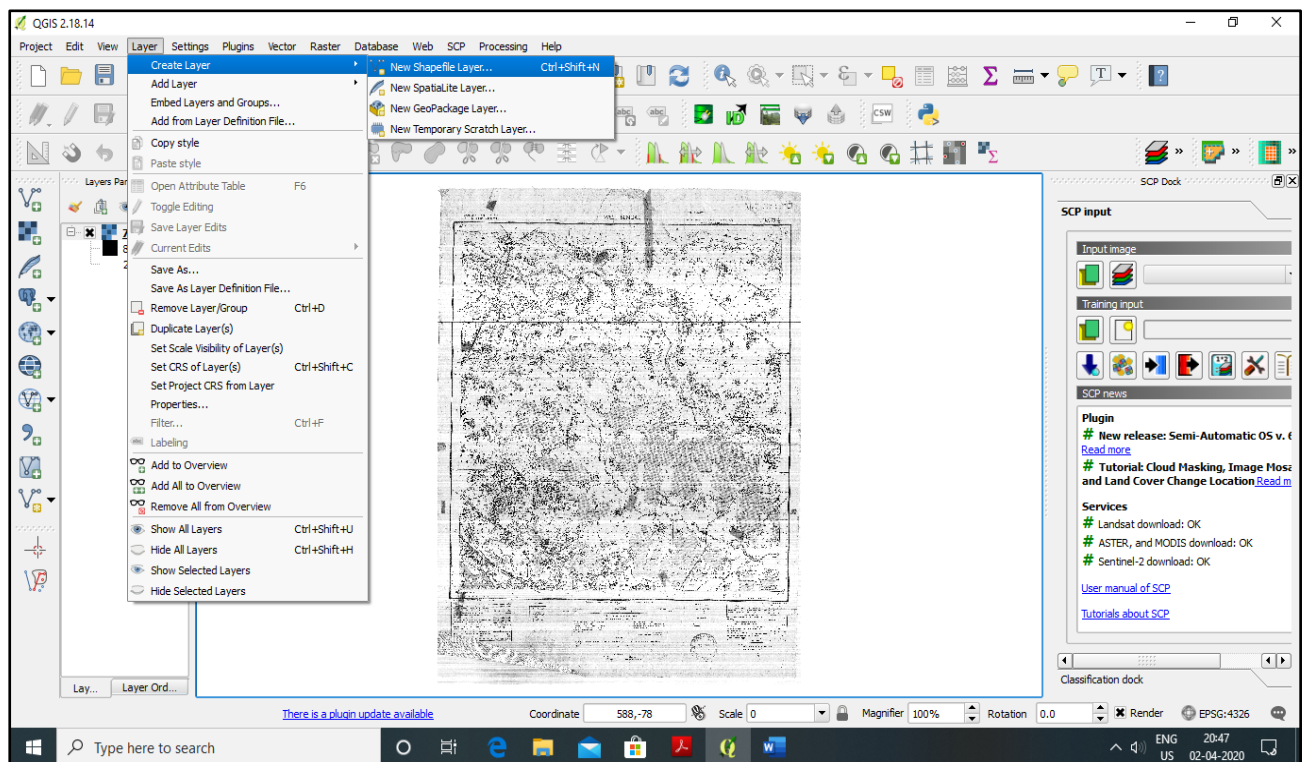


**MANUAL
ON
DIGITIZATION AND
EXTRACTION OF
ANTHROPOGENIC FEATURES
FROM TOPOSHEET
USING OPEN SOURCE
SOFTWARE: Q-GIS**

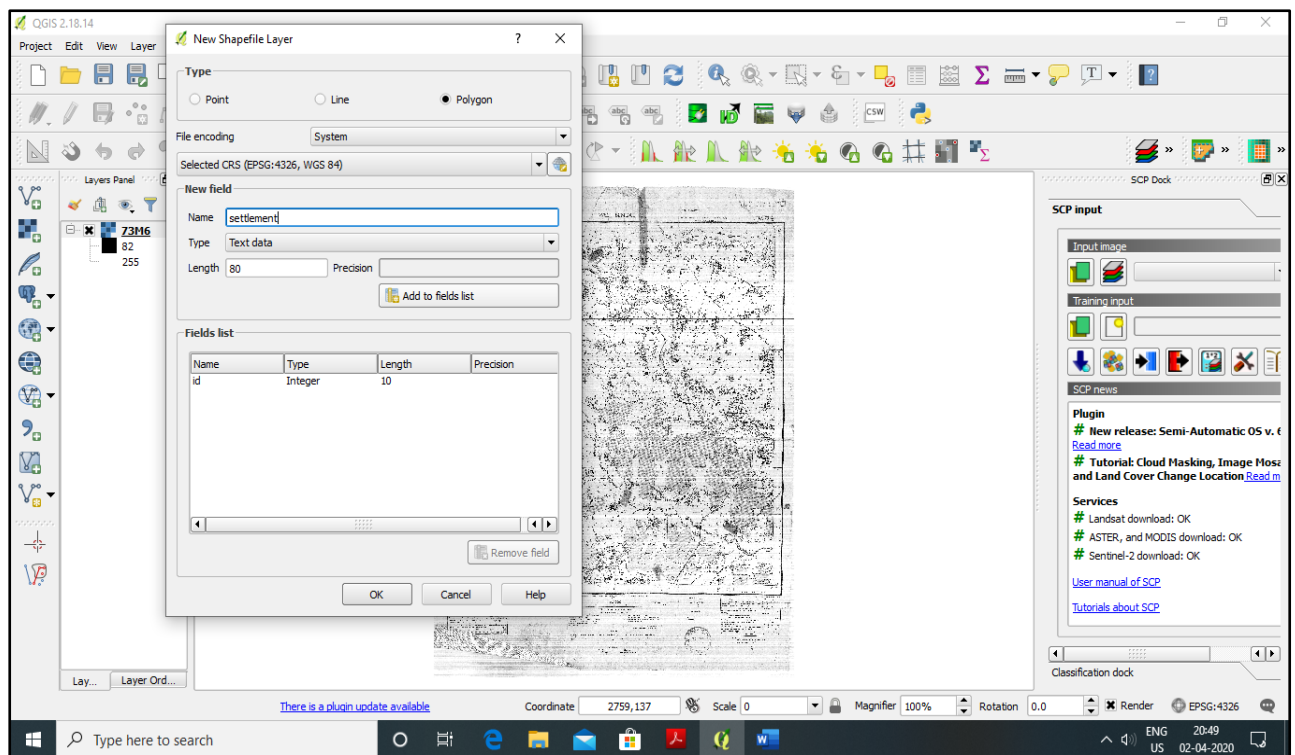
**Dr. RITUPARNA GHOSH
ASSISTANT PROFESSOR OF GEOGRAPHY
RANIGANJ GIRLS' COLLEGE**



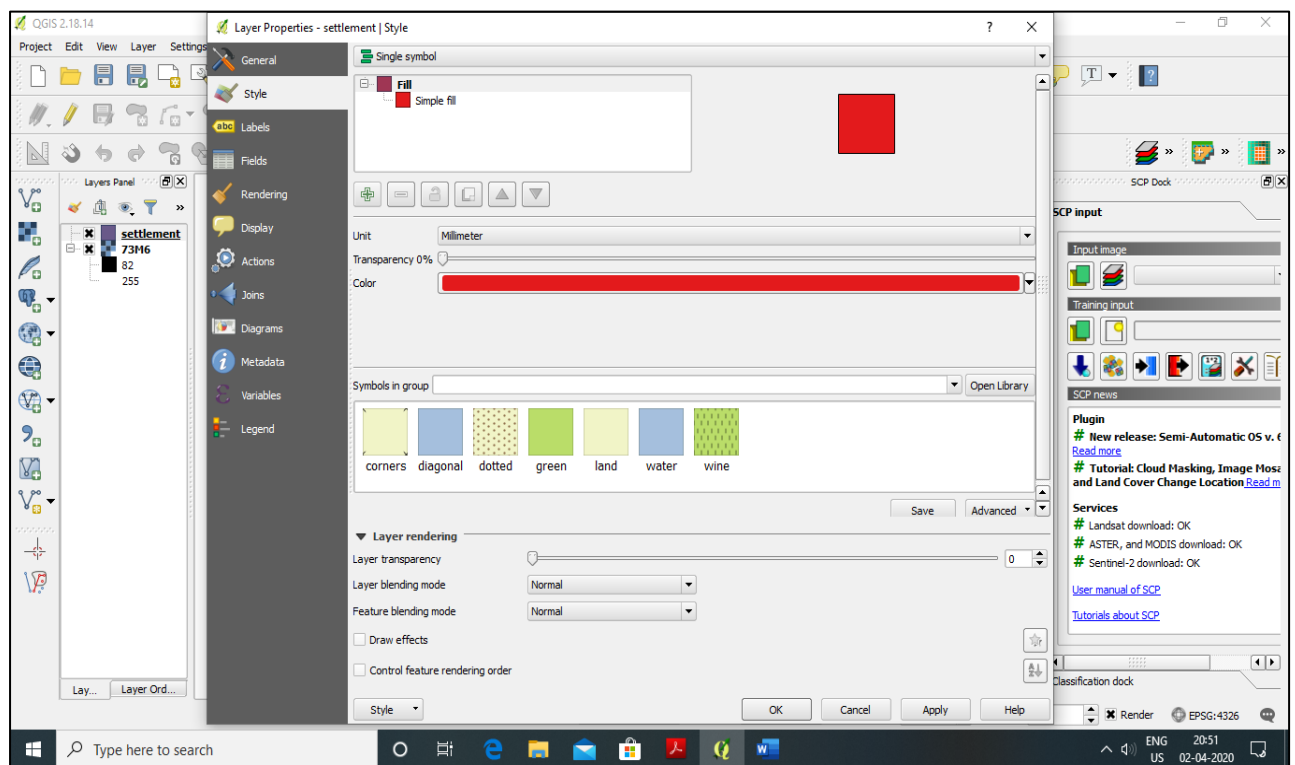
- 1) OPEN THE TOPOSHEET (RASTER LAYER) ON WHICH THE ANTHROPOGENIC FEATURE IS TO BE DIGITIZED



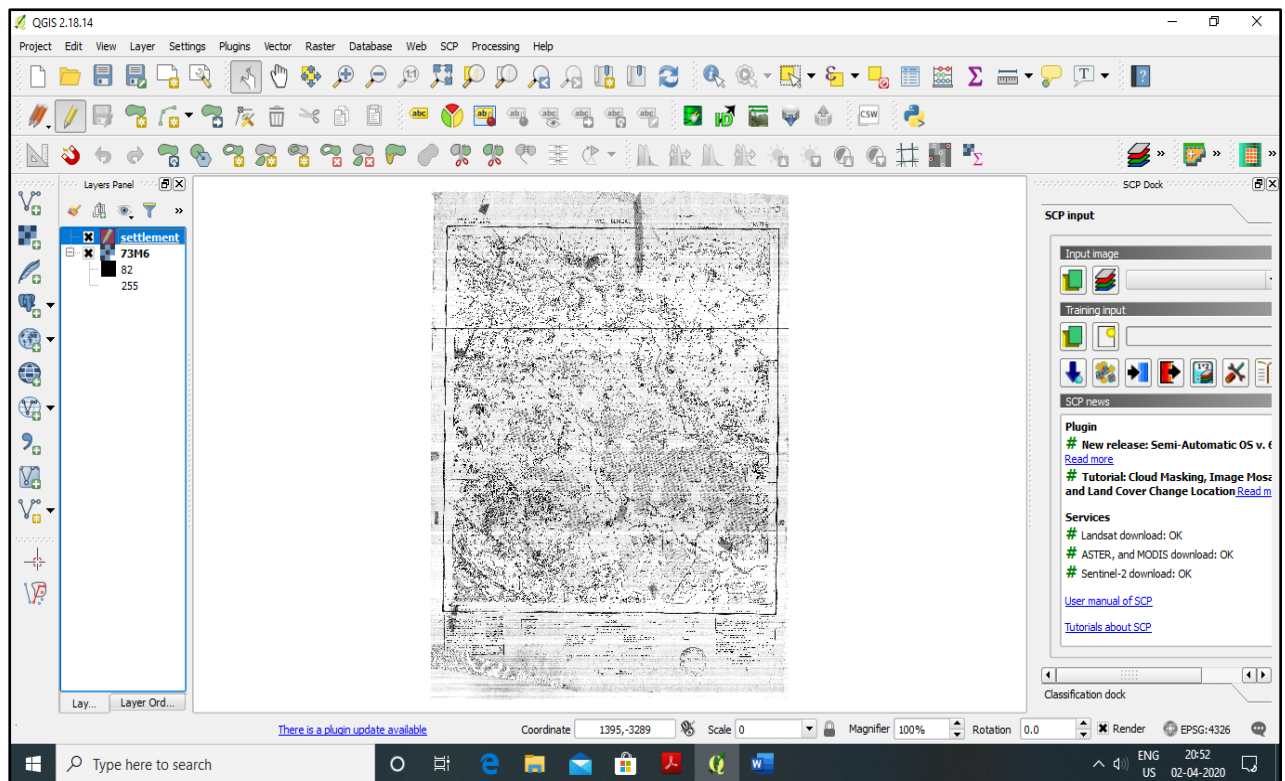
- 2) CREATE THE VECTOR LAYER



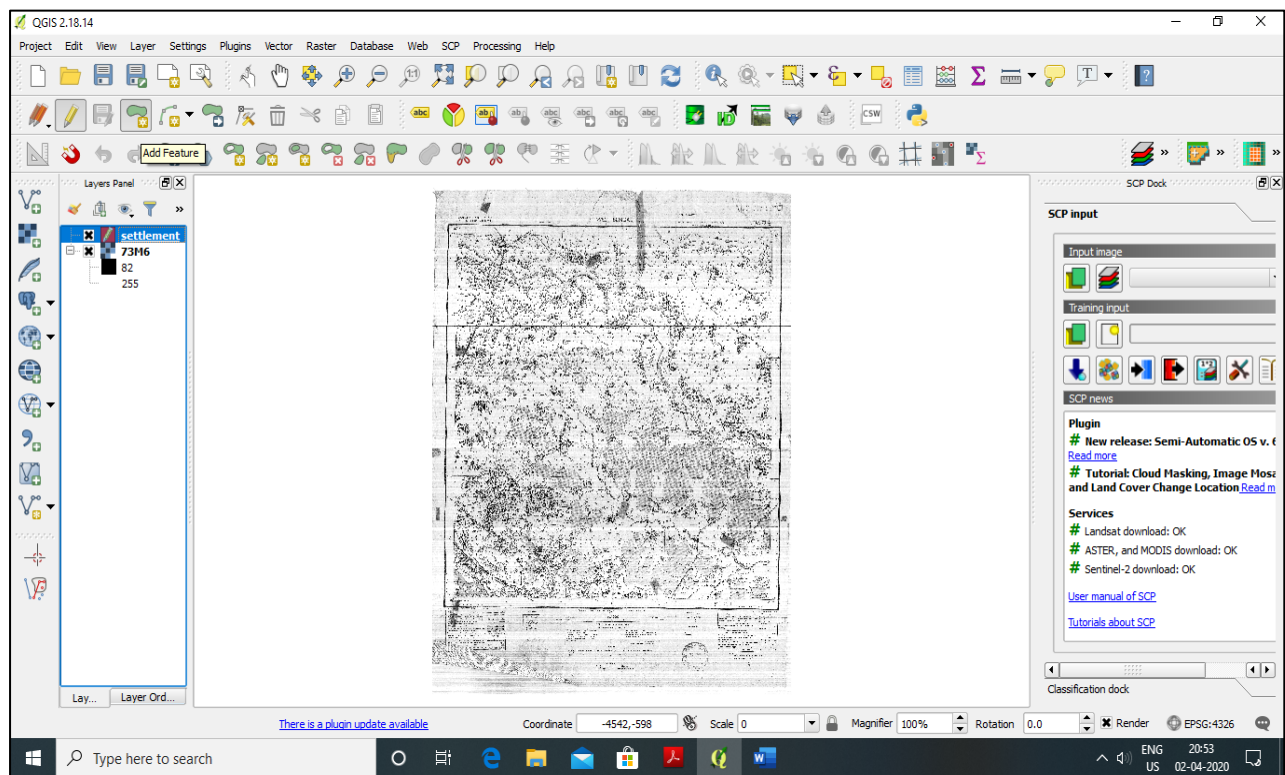
3) NAME THE VECTOR LAYER-SETTLEMENT



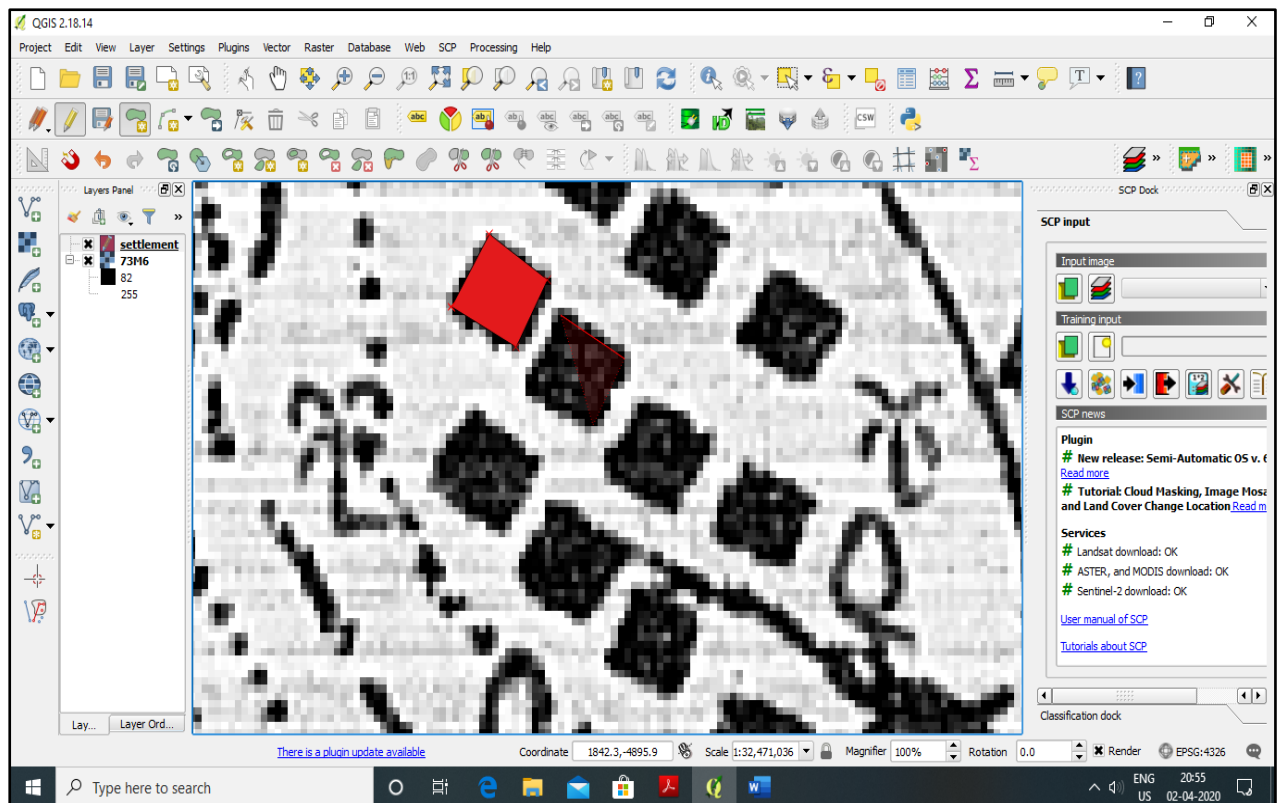
4) SELECT THE SYMBOL AND COLOUR FOR THE VECTOR LAYER



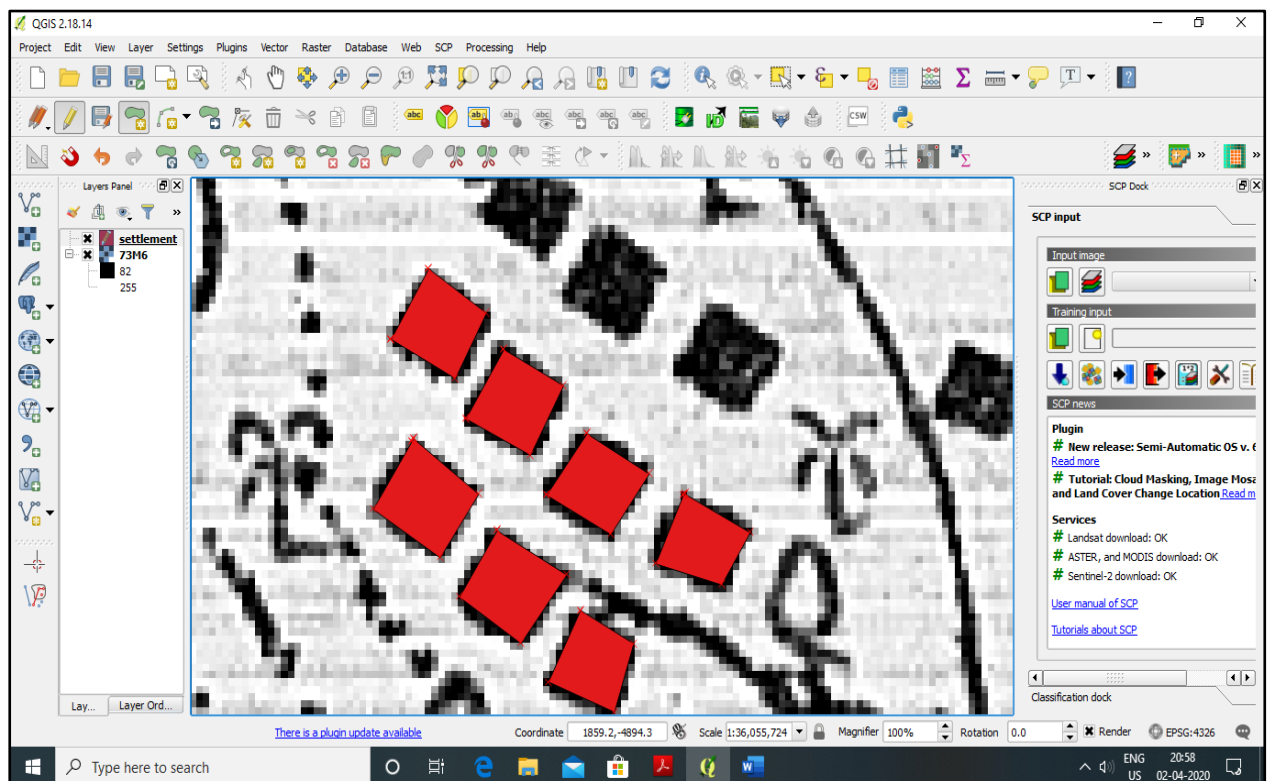
5) CHOOSE THE 'EDIT' ICON



6) SELECT THE ICON 'ADD FEATURE' TO BEGIN DIGITIZATION



7) DIGITIZE THE SELECTED AREA BY CLICKING ON IT. SINGLE LEFT CLICK IS REQUIRED



8) END THE DIGITIZATION PROCESS BY CLICKING ON THE SAME POINT WHERE THE SAME HAD BEEN STARTED